



PST Migration User Manual

1. Install PST Migration	2
1.1 Preparation.....	2
1.2 Installation	2
2. How to Use PST Migration	6
2.1 Select File Type	6
2.2 Select Folder	7
2.3 Some Settings for the Files	8
2.4 Log on to Exchange Server.....	9
2.5 Check Results	12

1. Install PST Migration

1.1 Preparation

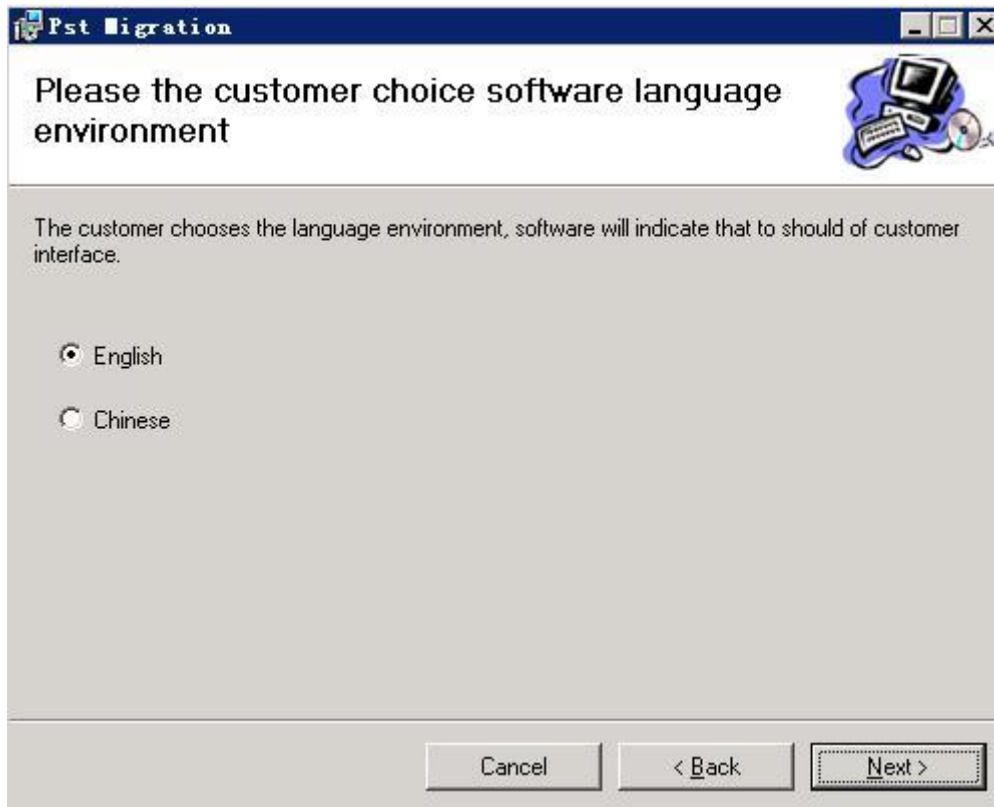
1. Make sure Microsoft Office Outlook is installed.
2. Make sure .Net Framework 2.0 is installed.

1.2 Installation

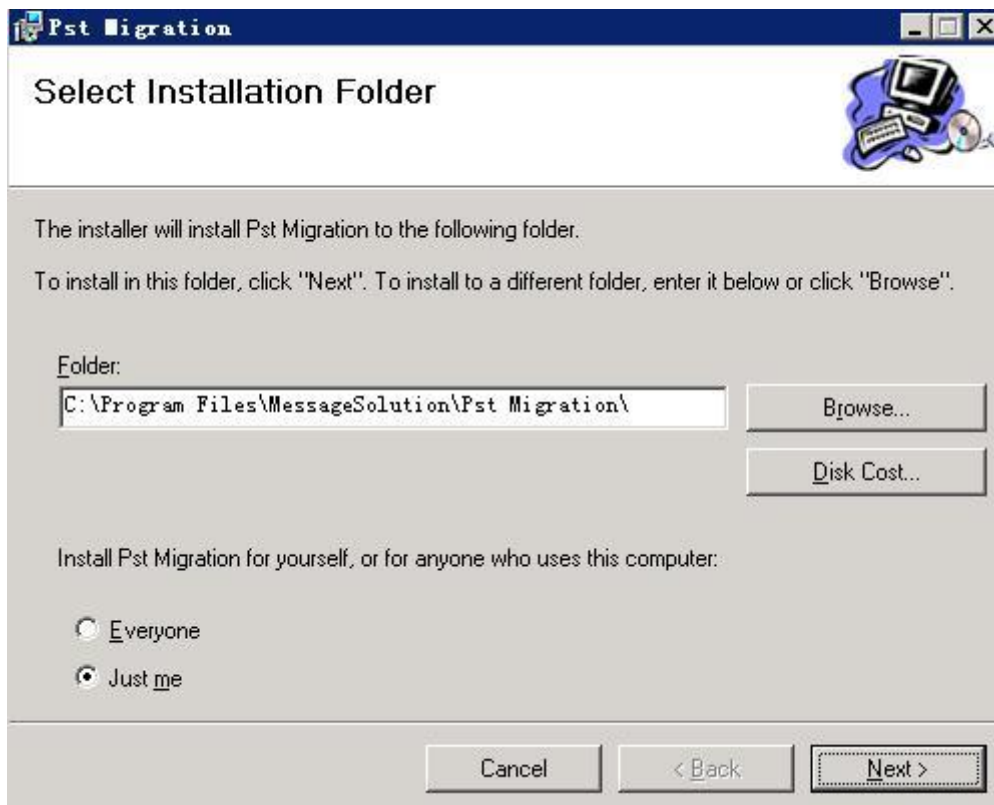
1. Click Next.



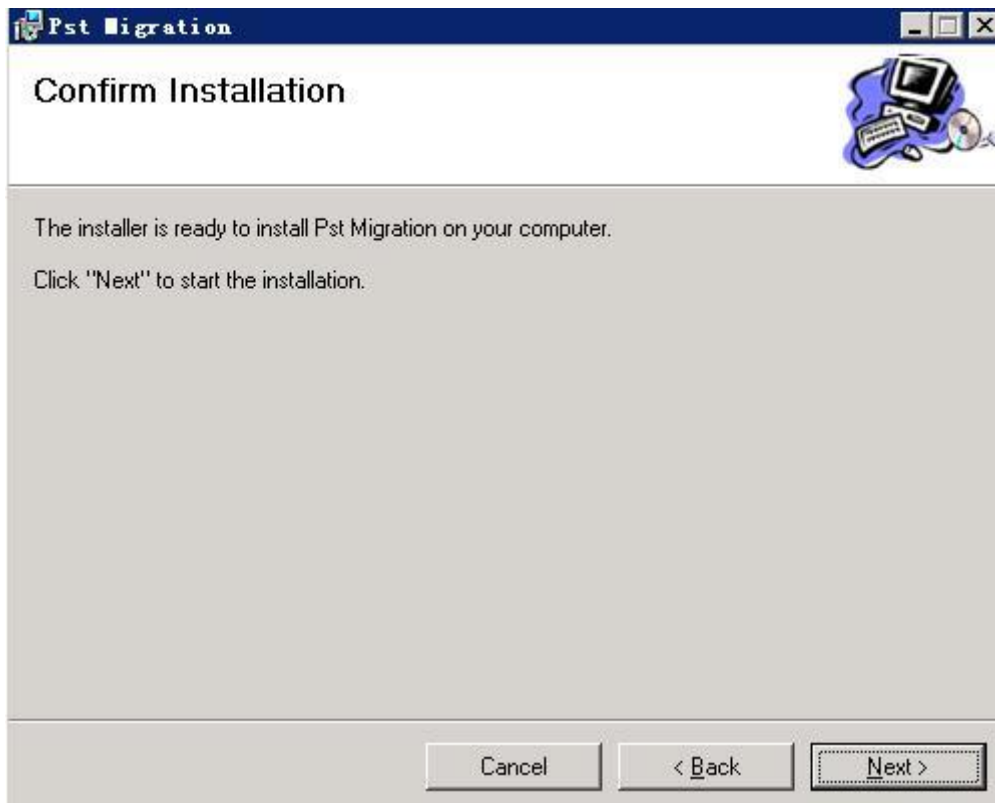
2. Select the language environment and click Next.



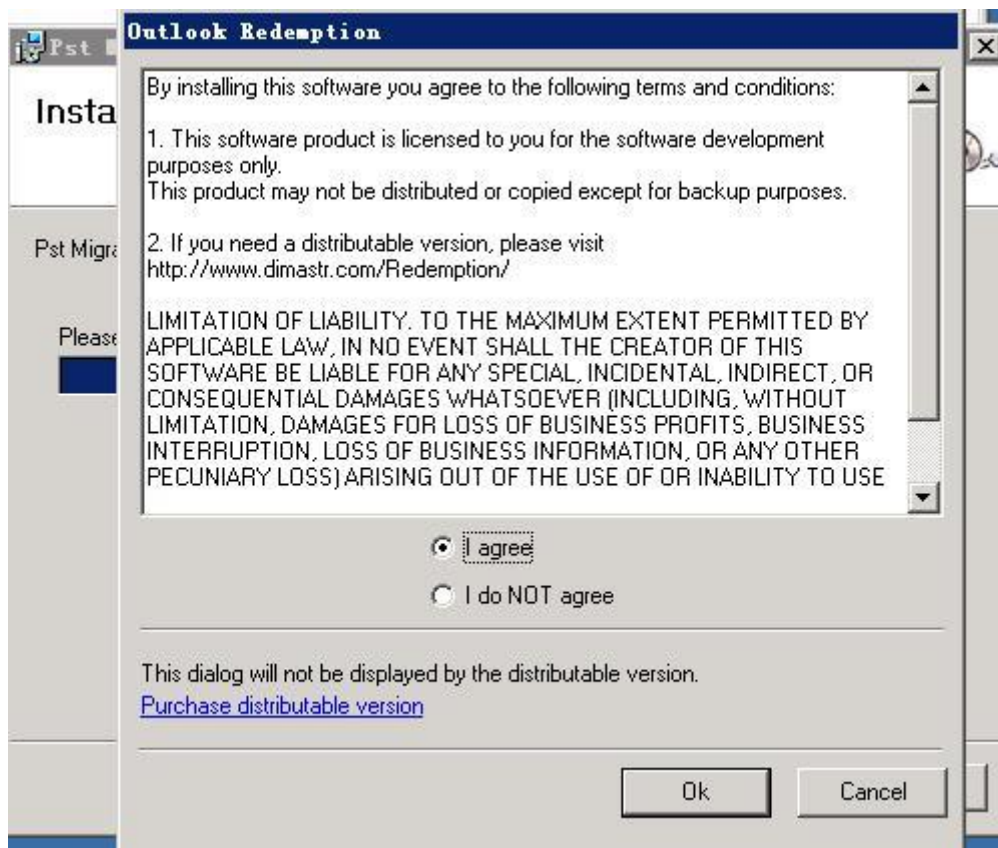
3. Choose the install path and click Next.



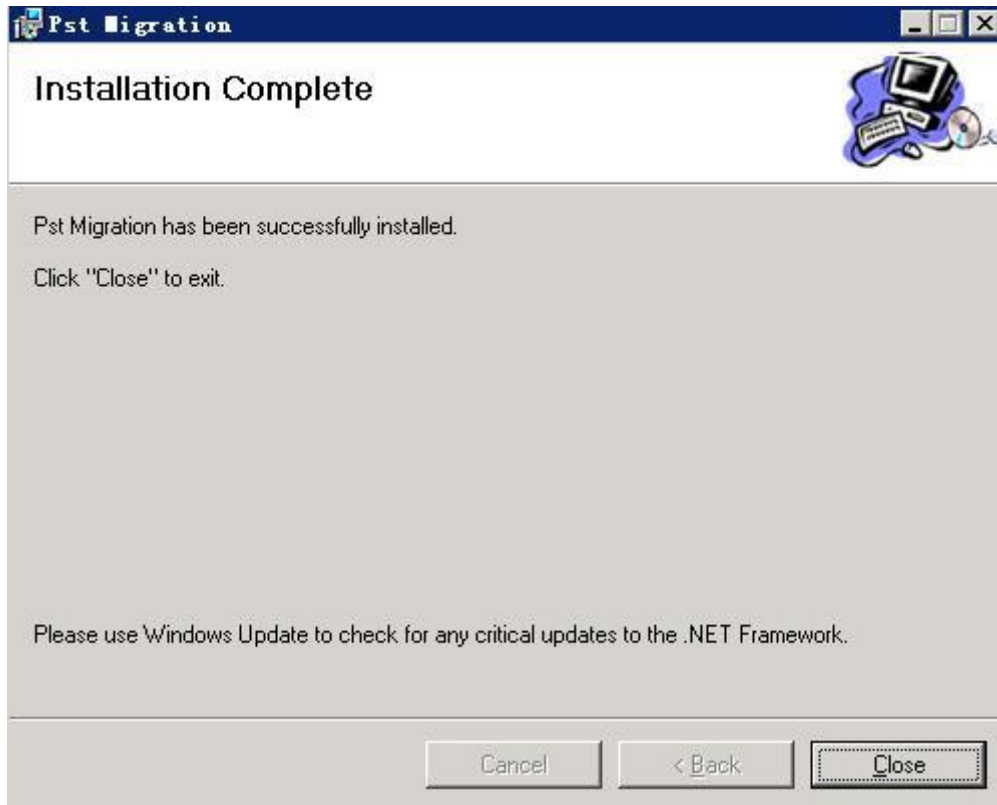
4. Click Next.



5. Select 'I agree' and Click OK.



6. Click Close to complete the installation.



2. How to Use PST Migration

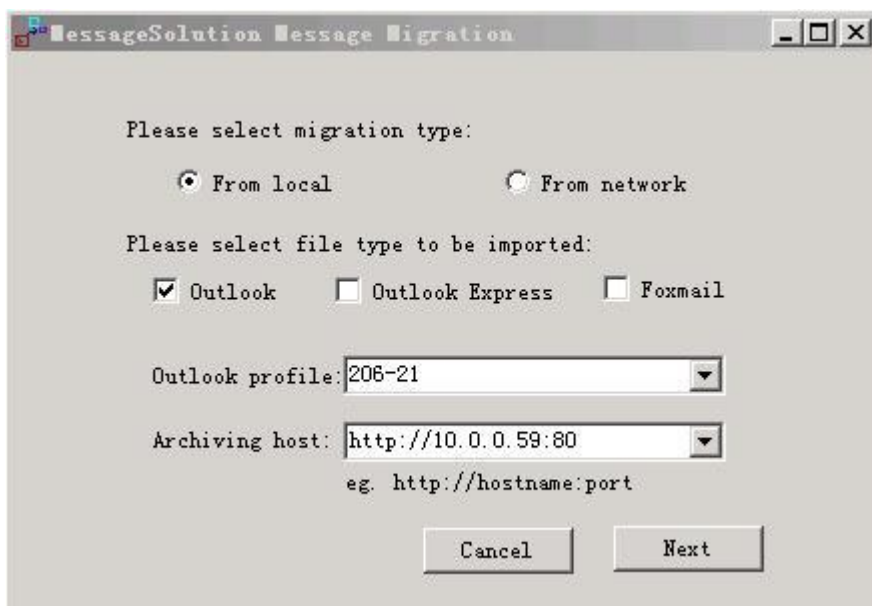
2.1 Select File Type

1. Select the migration type: Select 'From local' if your .pst files are located on your local host, otherwise select 'From network'.

Note: Make sure the PST Migration tool can connect to the .pst files if you selected 'From network'.

2. Select the type of file to be imported: Select 'Outlook' if the files are imported .pst files. Select 'Outlook Express' if the files are imported bdx files. Select 'Foxmail' if the files are imported box files.

Note: An Outlook profile (any profile will work) should be selected if the Outlook file type has been selected.



2.2 Select Folder

Select the folder to import the files. This folder can be located on both local host and network.



2.3 Some Settings for the Files

1. Select File Owner for each selected file. This ensures that when the file is uploaded to the EEA it will belong to the appropriate user. If a File owner is not selected, when the file is uploaded to the EEA it will belong to the Exchange administrator.
2. Select All/None: This selects all or none of the files found. The selected files will be migrated.
3. Don't assign user to all message files: This sets the File Owner to 'No Owner' for all message files.
4. Create stub in Exchange mailbox: This will migrate each selected file to the appropriate user in Exchange and then stub the selected files.

Note: Username/password is the administrator/password

MessageSolution Message Migration - Message Files

Found the following message files:

	File Path	File Owner	Size
<input checked="" type="checkbox"/>	C:\Documents and Settings\Administrator\Desktop\pst\sports.pst	46	265K
<input checked="" type="checkbox"/>	C:\Documents and Settings\Administrator\Desktop\pst\test.pst	46	265K

Select All/None
 Don't assign user to all message files
 Stub attachment only
 Create stub in Exchange mailbox

Username/password to logon Exchange

Domain name: Exchange host:
 Username: Password:
 folder name:

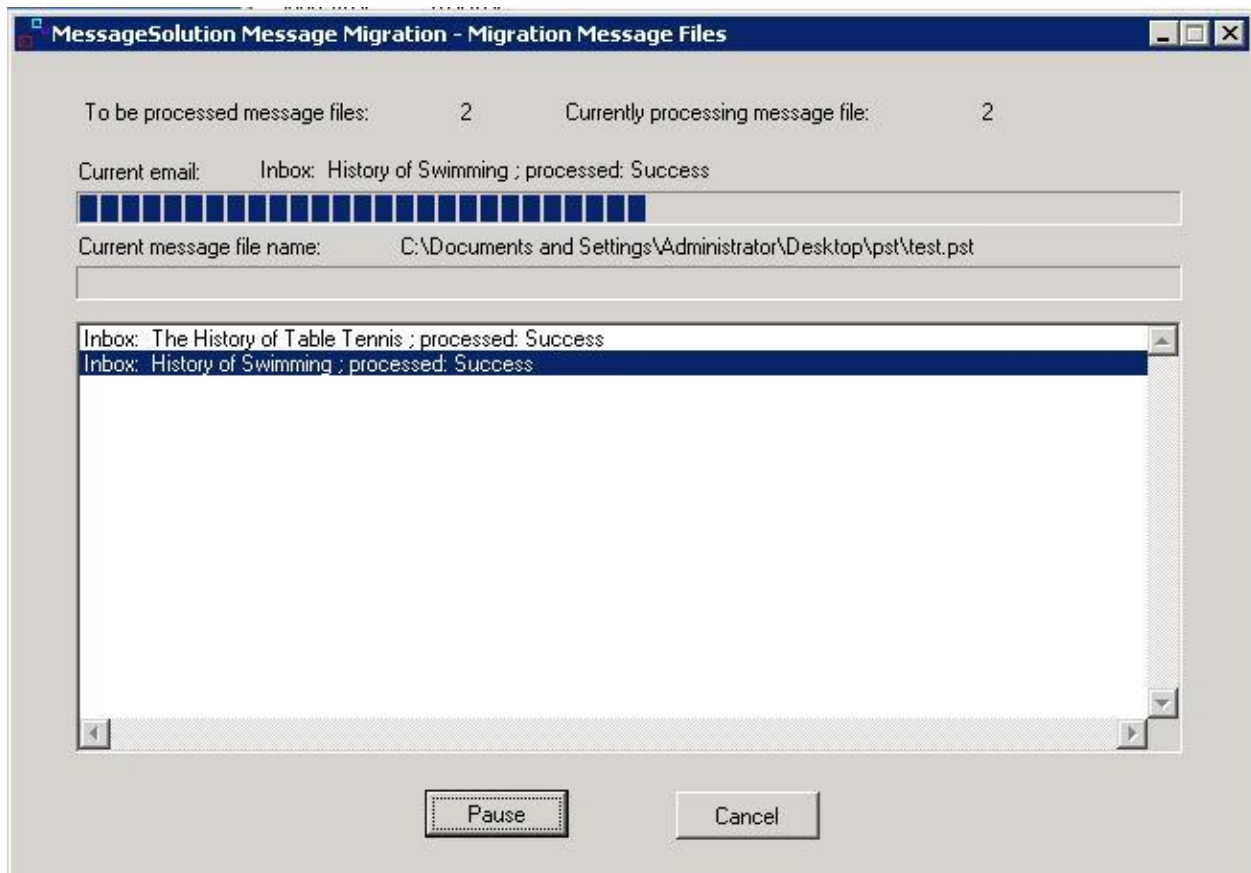
Can't create a folder with the PST file name under the Stub folder name.
 (If the stub folder name is empty, stub will be created under user's mailbox.)

2.4 Log on to Exchange Server

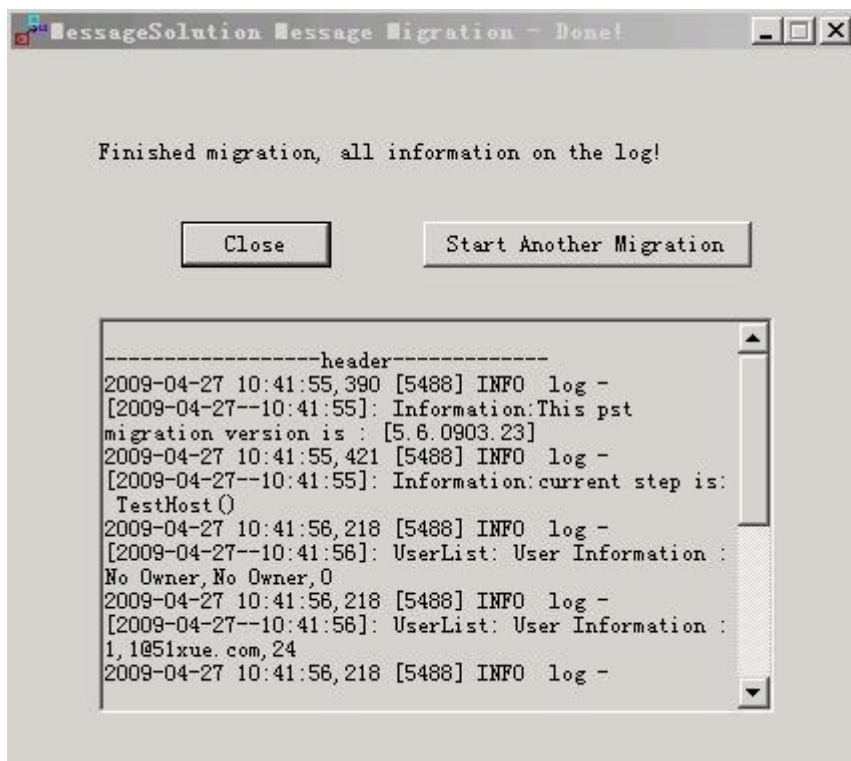
1. Log on to Exchange server, if you have not already done so.



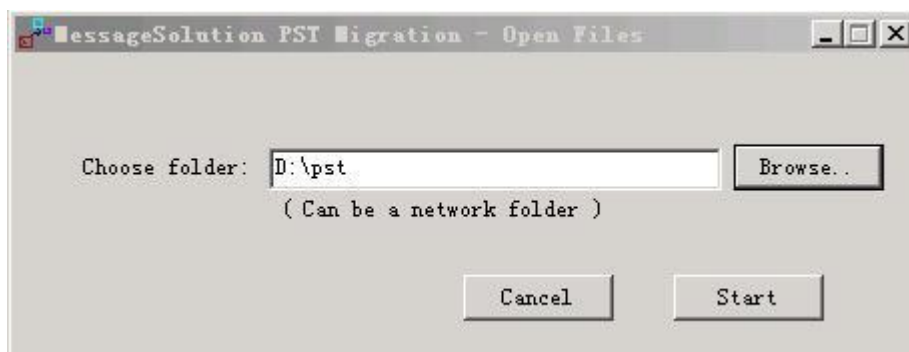
The migration process should look like this:



If you wish to migrate other files after the migration has finished, click 'Start Another Migration'. If you do not wish to migrate any more files, click Close to quit.

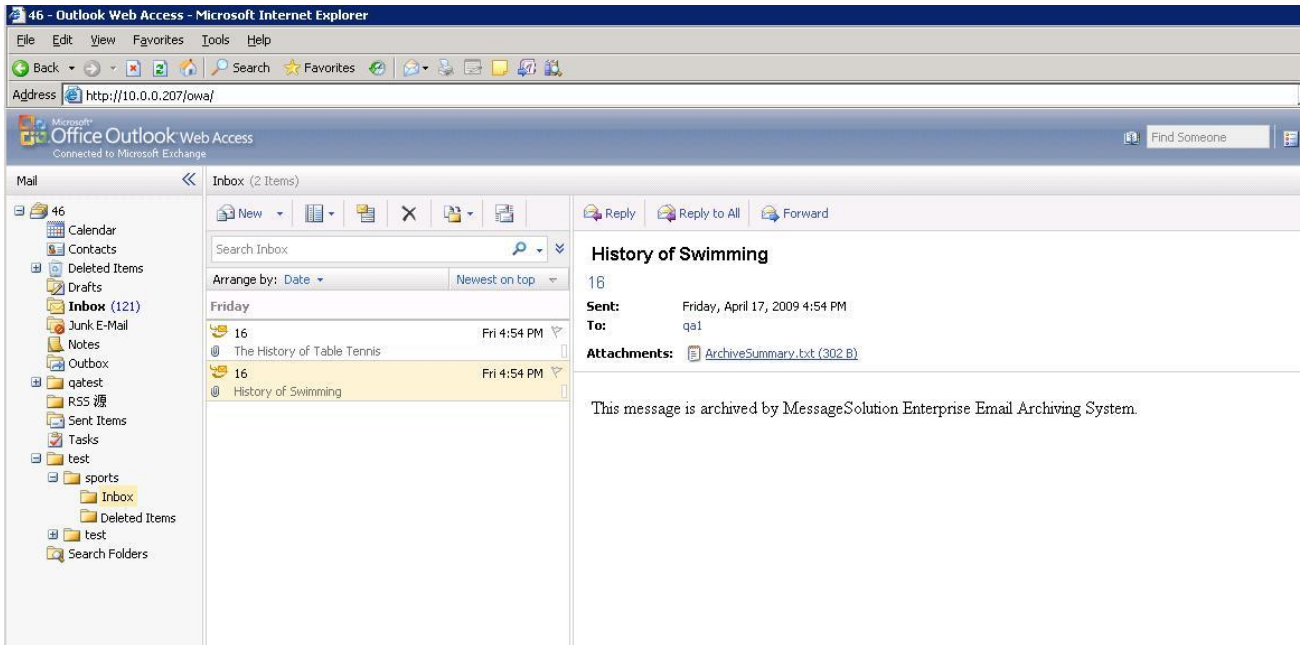


If you click the Start Another Migration button, the system will return to the Select Folder window for the next round of migration.



2.5 Check Results

1. To check the migration results, log on to the user that was selected as the file owner via Outlook Web Access (OWA). You should see the folder that you just entered as the migration folder name. Under this folder, you should see the mails that were just migrated.



2. It is possible to search these migrated mails in the EEA.

Search results:

The screenshot shows the MessageSolution Enterprise Email Archive interface. The current path is 'Search Emails -> Archived Email'. The search results table is as follows:

Sender	Recipient	Subject	Tag Info	Message Note	Date
16	qa1	History of Swimming		edit	2009-04-2
16	qa1	The History of Table Tennis		edit	2009-04-2
1@51xue.com	13@51xue.com	2 hello world		edit	2009-04-2
1@51xue.com	13@51xue.com	2 hello world		edit	2009-04-2
1@51xue.com	13@51xue.com	6 hello world	2 hello world	edit	2009-04-2
1@51xue.com	13@51xue.com	7 hello world		edit	2009-04-2
23@51xue.com	23@51xue.com	rrrrr		edit	2009-04-2
23@51xue.com	23@51xue.com	2222		edit	2009-04-2
23@51xue.com	23@51xue.com	Re: qqq		edit	2009-04-2
23@51xue.com	23@51xue.com	qqq		edit	2009-04-2

Viewing a migrated message:

The screenshot shows the detailed view of a migrated message. The headers are:

From: <"16">
 To: <"qa1">
 Date: Mon Apr 27 16:59:42 CST 2009
 Subject: History of Swimming
 Header: [Show Headers](#)
 Attachment: [attach.jpg](#) [swimming.txt](#)

Buttons: Back, Download, EML, Send To, As Original Email, Restore

Message Content:

By 1837, regular swimming competitions were being held in London's six... zed by the National Swimming Society in England. As the sport grew in popularity many more pools were built, and when a new governing body, the Amateur Swimming Association of Great Britain, was organized in 1880, it numbered more than 300 member clubs.

In 1896, swimming became an Olympic sport for men with the 100 metres and 1500 metres freestyle competitions held in open water. Soon after, as swimming gained popularity, more freestyle events were added, followed by the backstroke, breaststroke, butterfly and finally, the individual medley.

The first modern Olympic Games had only four swimming events, three of them freestyle. The second Olympics in Paris in 1900 included three unusual swimming events. One used an obstacle course; another was a test of underwater swimming endurance; the third was a 4,000-metre event, the longest competitive swimming event ever. None of the three was ever used in the Olympics again.

For a variety of reasons, women were excluded from swimming in the first several Olympic Games. In 1896 and again in 1906, women could not participate because the developer of the modern games, Baron Pierre de Coubertin, held firmly to the assumption, common in the Victorian era, that women were too frail to engage in competitive sports. It was only at the 1912 Games when women's swimming made its debut at the prompting of the group that later became known as the International Olympic Committee.

From the humble beginning with four swimming events, the Olympics have developed to 32 swimming races, 16 for men and 16 for women. The Special Olympics, competitive swimming for people with disabilities, has 22 events for men and 22 for women.

3. After installing OWA 2007 on the Exchange server we should see the stubbed messages migrated just as the normal messages are.

Congratulations, the migration was successful!

